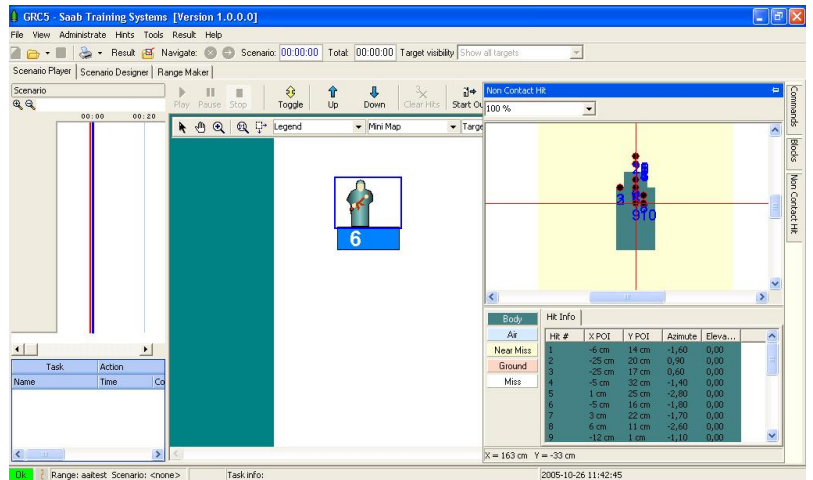




# Non-Contact Hit Scoring System



## Product capability

Performance characteristics.	Integration to lifter
	Type of rounds
	Number of rounds
	Measuring Area, Infantry
	Measuring Area, Tank
	Accuracy, Infantry
	Accuracy, Tank
	Angular restrictions
	Calibration
	High wind capability
	Environmental tested
	Low weight
Power source.	12V
Maintenance	Display for settings and malfunctions
Hit indication	GRC5
	Statistics
	Calibration
Communication	Radio or Hardwire

## Details

Two models available, one for the Infantry lifter and one for the Tank lifter. Fully integrated regarding power, communication and presentation/evaluation/analysis

All calibers with speed >1,2 Mach are detected

Up to 50-round burst at 2 000 rounds/minute

4 by 3 meters with defined accuracy, registrations are made outside this area but with less accuracy

6 by 4 meters with defined accuracy, registrations are made outside this area but with less accuracy

5 mm average at centre and 10 mm average over entire target

120 mm average at centre and 150 mm average over entire target

From perpendicular to the target board:  
±15° in azimuth and ±3° in elevation

No calibration required for different calibers

Wind speed up to 11 m/s (40 km/h) do not degrade accuracy

All weather proof, ruggedized design to train in all possible conditions and places. Experience from arctic to desert climates.

4,5 kg

Power supplied from lifter no external power required

Fault analysis through the BIT of the lifter and the test functionality in the GRC5 software

Fully integrated function, Selected target shows graphically the used silhouette and the position of the round and gives the X and Y coordinates from target centre.

All rounds are registered in the GRC5 SW and analysis like correction to the used sight, statistics of hit etc can be tailored.

No calibration required

No extra means of communication required. Fully integrated in to the lifter.