

SAAB Hand Held Computer HHC



SAAB TRAINING SYSTEMS



SAAB

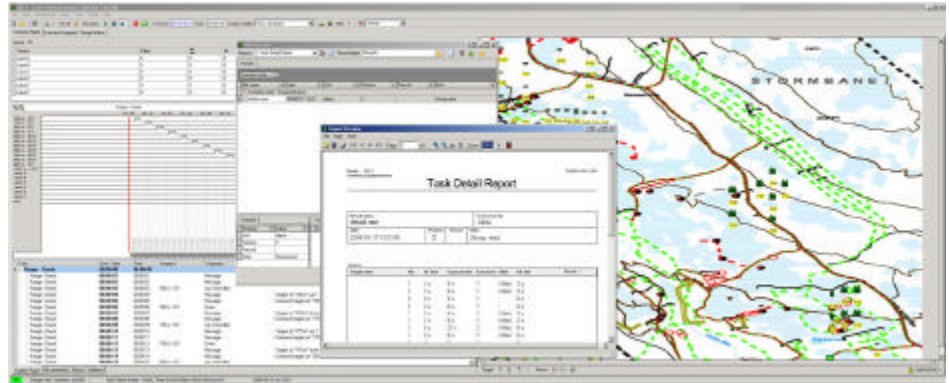
The HHC consist of a ruggedized all weather proof tablet PC, a radio unit and a harness. The radio has an internal rechargeable battery.

The GRC5 (Graphic Range Controller) is a Microsoft Windows based software that is used to control range equipment for live fire and laser simulation exercises. GRC5 was developed to meet the need for a more versatile modular approach to design and a more intuitive way of conducting an exercise. An after action review, AAR, is also included in the software.

The range maker is used to add range specific items such targets, pyrotechnics, movers and maps etc. to a range configuration.

Use drag and drop to add infantry, tank, moving infantry, moving armor or sound units to a range configuration.

Configure address, name and target silhouettes e.t.c. with an easy to use property editor



Scroll or zoom the range to handle large maps or range configurations. Use any bitmap image to represent the range background. When writing scenarios the scenario designer is used. This is a powerful editor that can be used to quickly write short easy scenarios as well as multi task scenarios with thousands of actions

A scenario overview provides a smart way to look at the scenario using time lines. There are no software limitations to the number of tasks or actions that a scenario can contain.

Develop scenarios with program flow control commands such as "GOTO task", conditional statements such as "Next IF killed" etc. Configure blocks and attritions and add them to the scenario.

Playback of an exercise is done in the exercise player. Use one scenario or combine several to form an exercise.

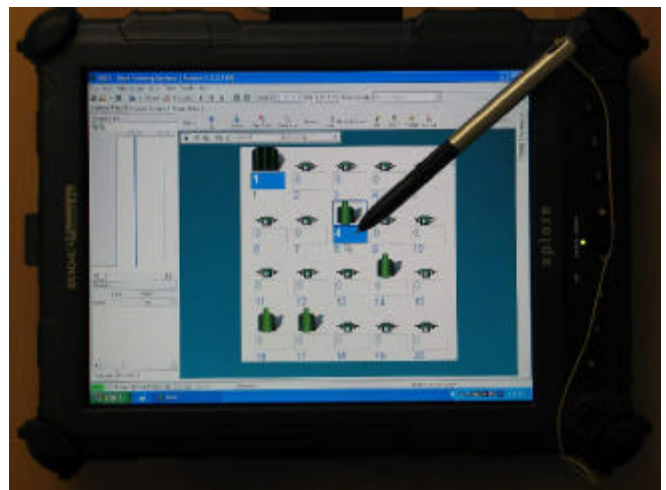
It is possible to operate authorized targets manually at any time, even during exercise playback. All targets manually activated during an exercise will be included in the result and marked with a manual tag.

The exercise can be paused any time during playback without affecting the scenario or result. The playback run sequentially from start to end or it can be stepped through one action at a time. Target status can always be accessed by simply moving the mouse over the target to present the target information hint.

To ensure full range operation prior to an exercise the control system can order BIT for all targets participating in the exercise. The result is then presented to the operator in an easy to read table view.

Combining several targets to form a block is a very powerful feature of the GRC5. Any target can be apart of any number of blocks. There are no software limitations to the number of blocks that can be created. All blocks can be operated as if they were single targets.

The GRC5 has a module that adds the capability to automatically simulate attacking and retreating of enemy forces using stationary range equipment. This is done simultaneously as the scenario playback continues.



Technical Data:

Individual targets to control	max 9999
Frequency Band	138-160MHz, 380-470MHz
Frequency Range	2MHz
Channel Spacing	12,5kHz
Output power	1W
Operating distance	up to 2000m
Temperature range	-20 - +55
All weather proof	